

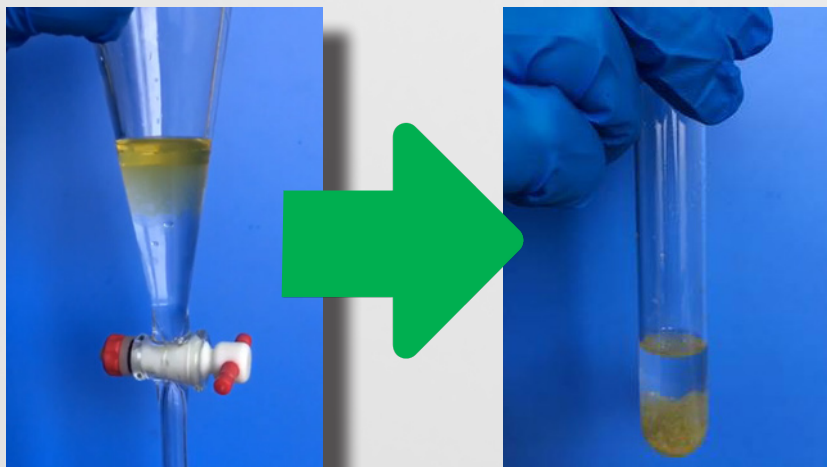


# Faster Chemistry<sup>LLC</sup>

*Your Chemistry... Faster*

*Get your chemistry done faster,  
greener and more cost effectively*

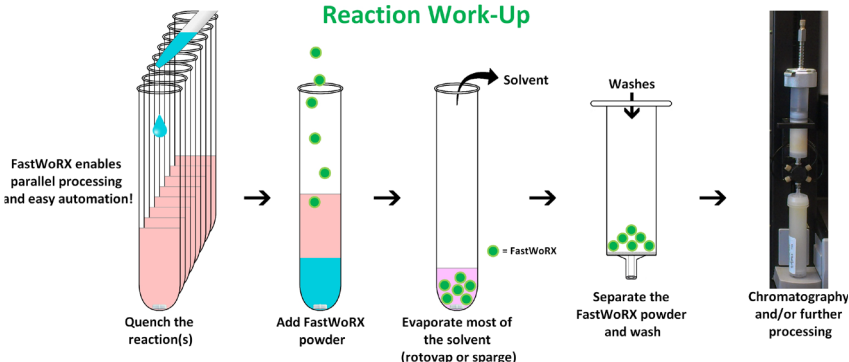
We offer a significantly better alternative to traditional liquid-liquid extraction used during reaction work-ups. Our FastWoRX products will reduce solvent use by 90% or more and work-up time by 50% or more.



Liquid-liquid extraction for work-ups after your reactions is labor intensive, consumes a significant amount of organic solvents and is not easily automated. In addition, there is possible emulsion formation that blurs the separation between liquid phases and a relatively high chance of contact with potentially hazardous solvents.

Our new FastWoRX products are a line of hydrophobic powders with an affinity for organic compounds. When added to a reaction mixture, the powder absorbs organics into its polymer coating. The resulting solid is then removed by simple filtration and target compounds are eluted with an organic solvent.

## General FastWoRX Powder-Based Reaction Work-Up



[www.fasterchemistry.com](http://www.fasterchemistry.com)

**CONTACT**

502-792-7878

[info@fasterchemistry.com](mailto:info@fasterchemistry.com)

[fasterchemistry.com](http://fasterchemistry.com)

**FastWoRX-based reaction work-ups have many benefits over LLE-based work-ups including:**

### Solvent Savings

For a typical reaction conducted at 100 mg scale, 20 to 50 mL of solvent is typically needed for traditional LLE-based work-up. FastWoRX-based reaction work-up can be done with only 0-5 mL of solvent.

### Time Savings

Traditional LLE-based reaction workup requires many steps such as LLE (10+ min per extraction, longer if there is emulsion formation), drying of the organic layers (20+ min), removing excess solvents with a rotavap (10 min) and loading the residue to a loading cartridge (10 min). Typically, the total time will be more than 50 min. FastWoRX-based work-ups only requires solvent removal and filtration steps- the total time will typically be 15 min or less.

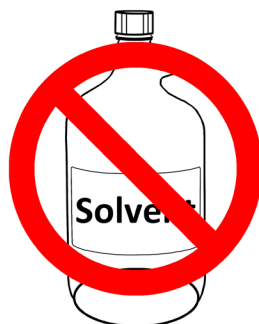
### Safety

Reduction in potential contact with hazardous reagents and solvents.

**FastWoRX™ - Forget the Separatory Funnel!**



**No Sep Funnels  
or LLE!**

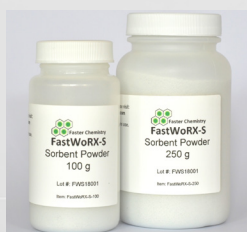


**Slash Solvent  
Use and  
Disposal!**



**No Emulsions!**

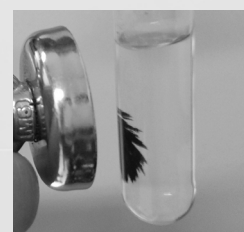
**Work-Ups with a Lot Less Work**



**FastWoRX-S** is a hydrophobic powder that absorbs most organics. It can easily and quickly be separated – along with the absorbed organics – from the aqueous phase by a simple filtration step that can be automated.



**FastWoRX-M** is a hydrophobic and magnetic black powder that absorbs most organics. It can easily and quickly be separated – along with the absorbed organics – from the aqueous phase by a magnet or a simple filtration. Using an electromagnet allows easy collection and release of the powder, enabling many automation possibilities.



## Ordering Information

Catalog #	Description	Packaging	Price- US\$
FastWoRX-M-25-1	Hydrophobic and magnetic black powder	25 grams, each	20
FastWoRX-M-100-1	Hydrophobic and magnetic black powder	100 grams, each	79
FastWoRX-M-100-4	Hydrophobic and magnetic black powder	100 grams, 4 units	285
FastWoRX-M-250-1	Hydrophobic and magnetic black powder	250 grams, each	159
FastWoRX-M-250-4	Hydrophobic and magnetic black powder	250 grams, 4 units	575
FastWoRX-S-25-1	Hydrophobic powder that absorbs most organics	25 grams, each	16
FastWoRX-S-100-1	Hydrophobic powder that absorbs most organics	100 grams, each	65
FastWoRX-S-100-4	Hydrophobic powder that absorbs most organics	100 grams, 4 units	235
FastWoRX-S-250-1	Hydrophobic powder that absorbs most organics	250 grams, each	149
FastWoRX-S-250-4	Hydrophobic powder that absorbs most organics	250 grams, 4 units	535