



**Faster
Chemistry** LLC

Your Chemistry... Faster

Introducing Fast2Flash™

The faster and greener way to do all your reaction work-ups and extractions

Fast2Flash™ Foam

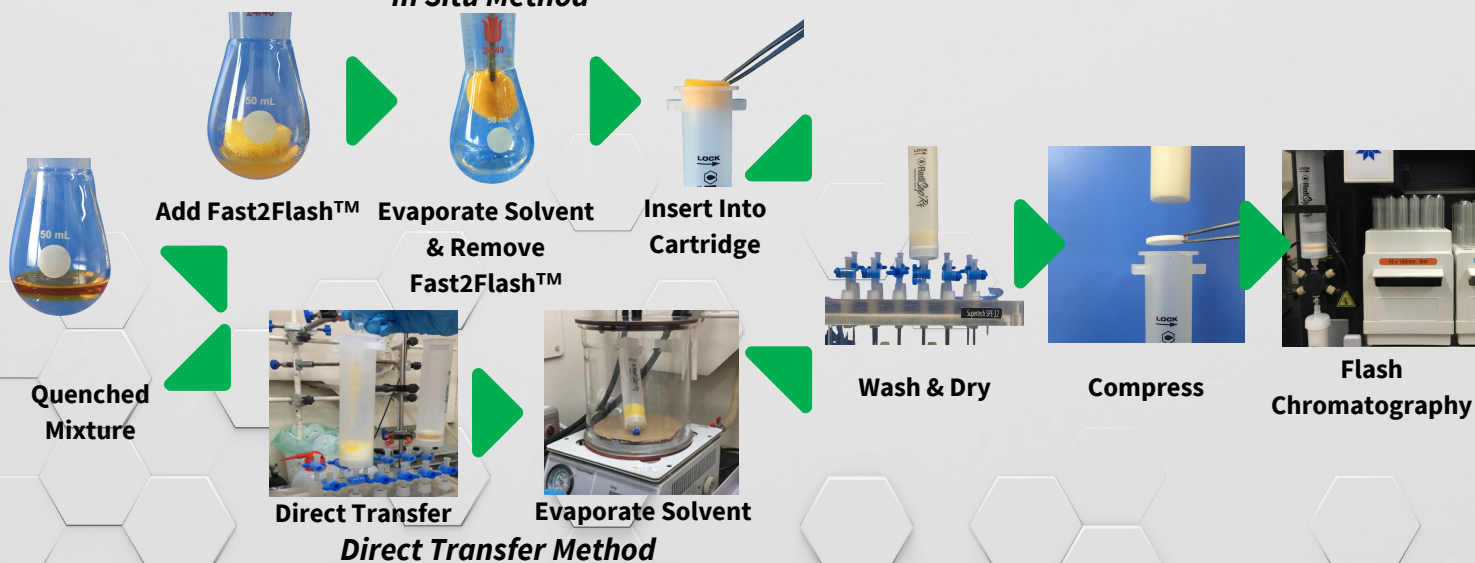


- Reduce work-up time by 50% or more
- Greener – reduce solvent use by 90% or more
- Eliminate liquid-liquid extractions and emulsion formation
- Automatable process
- Ideal for flash chromatography

Faster Chemistry's Fast2Flash™ technology is a hydrophobic and organophilic foam that eliminates the need for time- and solvent-consuming liquid-liquid extractions (LLE) to work-up a reaction mixture. Fast2Flash technology is essentially a "foam solvent". The organic products and solvents in the reaction mixture are "dissolved" in the foam. After the reaction solvent is evaporated, the products remain in the foam. The Fast2Flash foam with the products, after washing if needed, is then a convenient input for flash chromatography. It's that easy!

General procedures for using Fast2Flash™ - no LLE required!

In Situ Method



There are two ways to get your chemistry done faster with Fast2Flash™!

With the *in situ* method, the reaction is conducted and quenched as usual. **Fast2Flash™** foam is added to the mixture instead of a large amount of an organic solvent for conventional liquid-liquid extraction. After evaporating the reaction solvent, the **Fast2Flash™** foam is inserted into a dry loading cartridge. It can be washed and dried in the cartridge if needed. A top frit is inserted, the Fast2Flash foam is compressed and you are now ready for flash chromatography.

The *direct transfer method* makes work-ups even more efficient for small scale reactions that don't need quenching. The reaction mixture is directly poured through a loading cartridge preloaded with **Fast2Flash™** foam. The organics are absorbed in the **Fast2Flash™** foam and the aqueous phase flows through. Then, one or multiple cartridges (if doing parallel reactions) are put into a vacuum oven or purged to evaporate the organic solvent. The **Fast2Flash™** foam can be washed and dried in the cartridge(s) if needed. A top frit is inserted, the **Fast2Flash™** foam is compressed and you are now ready for flash chromatography.

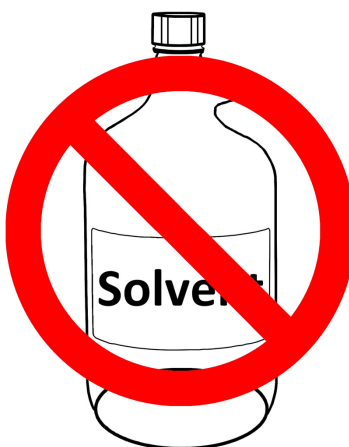
See the **Fast2Flash™ User Guide** at <https://fasterchemistry.com/Resources> for more information.

Fast2Flash™

*The faster and greener way to do all your
reaction work-ups and extractions*



No more Sep Funnels



Use 90% Less Solvent



No More Emulsions

**Reduce work-up time by 50% or more by
using the Fast2Flash™ Technology**

Ordering Information

| Catalog # | Description | Quantity | Price |
|---------------------------|------------------------------------------------------|-----------------|--------------|
| Fast2Flash-CF5 -10 | 16 mm Fast2Flash pad for a CombiFlash® 5g cartridge | 10 | \$79 |
| Fast2Flash-CF5-25 | 16 mm Fast2Flash pad for a CombiFlash® 5g cartridge | 25 | \$189 |
| Fast2Flash-CF25-4 | 28 mm Fast2Flash pad for a CombiFlash® 25g cartridge | 4 | \$32 |
| Fast2Flash-CF25-15 | 28 mm Fast2Flash pad for a CombiFlash® 25g cartridge | 15 | \$109 |

FasterChemistry.com

info@FasterChemistry.com 502-792-7878